

A **character** is a **person**, **animal**, or **thing** in a story.

► **Characters** talk or do something.

One day, a little girl named **Josie** was crying at the park. She lost her ball. The **Dancing Frog** said, "I have a gift for you, Josie." It was a new ball!



**Not** a character:



### Check for Understanding

Can the monkey be a character in a story? Explain.



Can the park be a character in a story? Explain

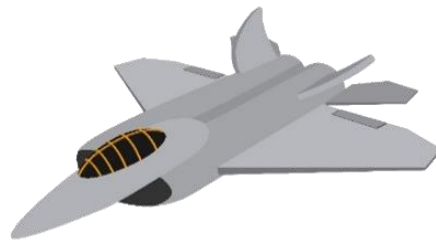


1. Read the story.
2. Identify the character. (“\_ is the character because”)

**1.**

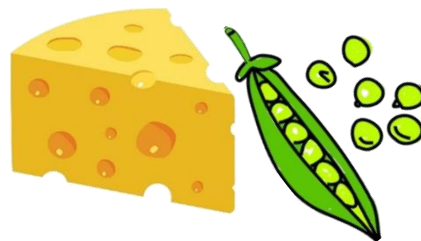
### Jet Day

<sup>1</sup>Ethan was playing outside. <sup>2</sup>He heard a loud sound from the sky. <sup>3</sup>When Ethan looked up, he saw a jet. <sup>4</sup>“Wow! <sup>5</sup>That jet is fast!” said Ethan.

**Ethan****Jet****2.**

### Greedy Hippo

<sup>1</sup>The greedy hippo ate everything in sight. <sup>2</sup>From cheese to peas, he always had a bite. <sup>3</sup>The other animals were angry. <sup>4</sup>The greedy hippo ate all their food.



1. Read the story.
2. Identify the character. (“\_ is the character because”)

3.

### School Days

<sup>1</sup>Betty is a school backpack. <sup>2</sup>She carries pencils and books for students. <sup>3</sup>She can be found hanging out in the classroom. <sup>4</sup>Betty says, “Always try your best!”



## Skill Closure

1. Read the story.
2. Identify the character. (“\_ is the character because”)

### Fluffy the Cat

<sup>1</sup>Fluffy is a big cat. <sup>2</sup>She likes to play with her toys. <sup>3</sup>Fluffy does not like to go outside. <sup>4</sup>Fluffy sleeps on a yellow chair.



## Concept Closure

Speaking



Why are the toys not a character in the story above? (Pair-Share)

## Summary Closure

What did you learn today about identifying characters in a story?

---



---



---

### Word Bank

- ▶ characters
- ▶ person
- ▶ animal
- ▶ thing

Read the story. Circle the character.

### Marty the Hammer

<sup>1</sup>Marty is a hammer. <sup>2</sup>He lives in a toolbox. <sup>3</sup>"I am a very good builder," said Marty. <sup>4</sup>He uses nails and wood to build a birdhouse.



Speaking



Why is the nail not a character in the story above? (Pair-Share)

Listening



Listen to the story.  
Who is the character in the story?



hill



Thomas

## Speaking



Read the story. Answer the question with a partner.

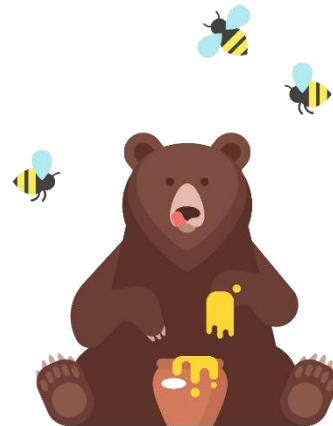
### A Hungry Little Bear

Little Bear is hungry. He sees his friend, Buzz the bee. "Excuse me, Buzz. May I have some honey?" asks Little Bear. "Sure," says Buzz.



**Why is honey not a character.** (Pair-Share)

**What detail tells us that the bear is a character?** (Pair-Share)



# Speaking



Look at the place. What character will you find in that place? How do you know?

