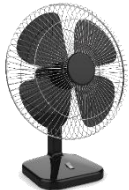


The **initial sound** is the **first sound** in a word.

Initial /f/ sound



fly



fan



fish

Not initial /f/ sound



leaf

1. Listen to the initial sound.
2. Listen to the words.
3. Identify the word with the initial sound. (circle)

1

/f/



fog



dog

2

/f/



fawn



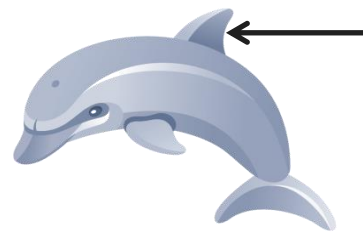
lawn

3

/f/



leaf



fin

4

/f/



phone



knife

The **initial sound** is the **first sound** in a word.

Initial /v/ Sound

Not initial /v/ sound



vet



vase



vest



five

1. Listen to the initial sound.
2. Listen to the words.
3. Identify the word with the initial sound. (circle)

5

/v/



vase



lace

6

/v/



whale



veil

7

/v/



cave



vet

8

/v/



voice



shave

The **initial sound** is the **first sound** in a word.

Initial /p/ Sound



Not initial /p/ sound



1. Listen to the initial sound.
2. Listen to the words.
3. Identify the word with the initial sound. (circle)

9

/p/



pan



nap

10

/p/



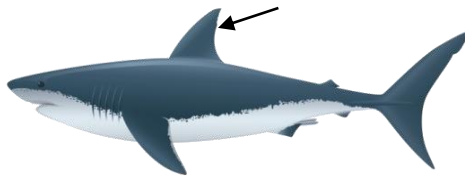
top



pot

11

/p/



fin



pin

12

/p/



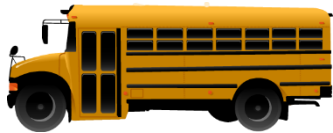
ten



pen

The **initial sound** is the **first sound** in a word.

Initial /b/ Sound



bus



bow



boy

Not initial /b/ sound



robe

1. Listen to the initial sound.
2. Listen to the words.
3. Identify the word with the initial sound. (circle)

13

/b/



hat



bat

14

/b/



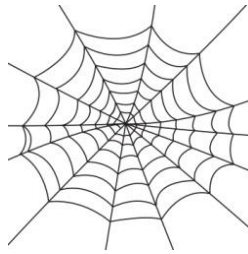
boat



coat

15

/b/



web



bed

16

/b/







boot



tube

Skill Closure

1. Listen to the initial sound.
2. Listen to the words.
3. Identify the word with the initial sound. (circle)

<p>1</p>	<p>/v/</p>	 <p>vase</p>	 <p>dive</p>
<p>2</p>	<p>/f/</p>	 <p>calf</p>	 <p>fish</p>

Concept Closure

Raquel can hear the /p/ sound in
 She says /p/ is the
 initial sound. Is Raquel correct?



Summary Closure

What did you learn today about isolating initial sounds?

Word Bank
first sound

1. Listen to the initial sound.
2. Listen to the words.
3. Identify the word with the initial sound. (circle)

1

/f/



feet



roof

2

/v/



boat



vine

3

/p/



peach



chip

4

/b/



bug



rug

Identify the word with the initial sound.

<p>1</p>	<p>/p/</p>	 <p>pine</p>	 <p>soup</p>	 <p>pink</p>
<p>2</p>	<p>/f/</p>	 <p>face</p>	 <p>food</p>	 <p>bag</p>

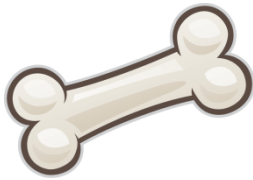
Listen to the word for the picture.
What is the initial sound?

<p>1.</p>  <p>five</p>	<p>2.</p>  <p>bib</p>	<p>3.</p>  <p>van</p>
---	--	---

Identify the word with the initial sound.

Initial Sound: /b/

1.



[bone]



[bus]



[tub]

Initial Sound: /v/

2.



[dive]



[dove]



[vase]

Ethan thinks the pictures below have the initial /b/ sound. Is he correct? Explain.



peach



pan



path