

Revise means to **change written text** to **improve it**.

Add Sentences when...

main idea is missing
more details are needed

Delete Sentences when...

details do not support the **main idea**

Olympic Games

Every four years, competitors from around the world compete in the Olympic Games. **The games feature summer and winter sport competitions**

The Summer Olympic Games occur in summer. Approximately 10,000 athletes compete in 300 or more events. **Many games are played on a field.** Field games include baseball, basketball, soccer, and track and field.

The Winter Olympics Games are usually held in January and February. ~~During World War II, the Winter Olympics were cancelled.~~ The Winter Games offer about 70 events. The events are played on ice or snow.



CFU

What sentence should be added to the end of the last paragraph? Explain.

- A** Some of these events include figure skating, speed skating, skiing, and ice hockey
- B** Ice hockey is a contact team sport played on ice, usually in a rink, with two teams of skaters.

In your own words, when is it necessary to delete or add sentences to a passage?

In your own words, what does it mean to revise text?

1. Read the text and refer to the **bolded main idea**.
2. Delete details that do not support the main idea. (cross out)
3. Add details that support the main idea. (answer questions)

Tennis Games

¹There are two types of tennis matches. ²**Tennis can be played between two people in a singles match, or between four players in a doubles game.**

³The courts are smaller in a singles match. ⁴Players in a singles match get more money than the doubles. ⁵Alleys are not included. ⁶In a singles game, each player serves and defends their court without assistance from another player.

⁷A doubles match is two pairs of players. ⁸The court is wider and it includes the alleys. ⁹Unlike a singles match, a doubles match allows the players to work as a team to protect their court. ¹⁰To win in tennis, the players must win by two points. ¹¹The two players on the receiving side can only change positions after a point is made.

1 What key detail could be added to paragraph B?

- A A singles match is harder to play.
- B A singles match is when two players compete against each other.
- C In a singles match, the player must cover more ground.

2 Which detail could be added to the end of Paragraph C?

- A The Bryan twins are one of the world's best doubles team.
- B The tennis racket is the same for both singles and doubles.
- C One player stands by the net and the other near the baseline in a doubles match.

1. Read the text and refer to the **bolded main idea**.
2. Delete details that do not support the main idea. (cross out)
3. Add details that support the main idea. (answer questions)

Careers

A ¹Physician and police officer are jobs that serve people. ²**These careers have specific duties and educational requirements.**

B ³A physician is a doctor who helps people that suffer from illness and injury. ⁴A doctor is required to earn a four-year bachelor's degree. ⁵After this, a physician attends a medical school followed by an internship₄. ⁶Most doctors have huge loans after school, because medical school is very expensive.

C ⁷A police officer responds to emergencies and patrols the area. ⁸Police officers also help direct traffic, give aid to the injured, and investigate crimes. ⁹They have a very dangerous job. ¹⁰A police officer is required to hold a criminal justice degree and train at a formal academy.

3 Which detail could be added to the end of Paragraph C?

- A** A police officer has to be brave and strong.
- B** A police officer must also pass eye, hearing, and fitness tests.
- C** Physicians attend school longer than police officers.

4 Which detail needs to be added to paragraph B after sentence 5?

- A** Also, physicians must pass a state medical test to treat patients.
- B** A doctor can work multiple days in a row before having a day off.
- C** There are different types of doctors that specialize in different illnesses and injuries.

Skill Closure

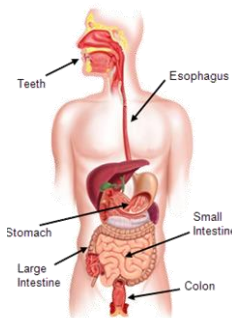
1. Read the text and refer to the **bolded main idea**.
2. Delete details that do not support the main idea. (cross out)

The Digestive System

A **The digestive system follows a specific process.** The digestive system is a group of organs that work together to break down food.

B The first step in the digestive system is the mouth and teeth. Using saliva, the teeth mash and chew the food into small pieces, so that it can fit down the throat. Teeth are made up of three hard tissues and one soft tissue.

C The esophagus is the second step in the digestive system. The esophagus helps a person swallow the food.



Concept Closure

The esophagus has contracting muscles that move food to the stomach.

Cynthia thinks the sentence above should be added to paragraph B in “The Digestive System”. Roco disagrees. He thinks it should be added to paragraph C. Do you agree with Cynthia or Roco? Explain.

Summary Closure

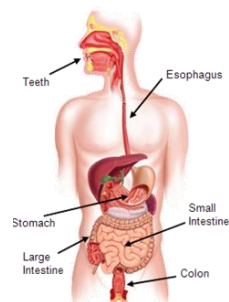
What did you learn today about revising writing from a text?

Word Bank

revise
improve
add
delete
main idea
key details

Read the writing. Answer the questions.

The Digestive System



A **The digestive system follows a specific process.** The digestive system is a group of organs that work together to break down food.

B The first step in the digestive system is the mouth and teeth. Using saliva, the teeth mash and chew the food into small pieces, so that it can fit down the throat. Teeth are made up of three hard tissues and one soft tissue.

C The esophagus is the second step in the digestive system. The esophagus helps a person swallow the food.

1 Which detail could be added to the end of Paragraph B?

- A** Teeth are made of tissue called enamel.
- B** Some food is more difficult to chew.
- C** The saliva in the mouth also helps break down the food.

The stomach is the next place food starts to be broken down.

Van thinks the sentence above should start a new paragraph D in "The Digestive System". Mirna disagrees. Do you agree with Van or Mirna? Explain.

**Cross out details that do not belong.
Answer the questions.**

Using Food to for Celebrations

- A** Food is an important part of any celebration. **Countries all over the world use food to celebrate special occasions.**
- B** Countries across the world use food to celebrate the New Year. In Greece, a special cake is baked with a coin inside it. The Japanese culture cooks twenty dishes one week before New Year, where each dish signifies a New Year's wish. Not all the wishes come true.
- C** Birthday parties are centered around food. People in many parts of the world celebrate their birthday by providing food for their guests and a special cake with lit candles

Dmitri would like to add another paragraph. Which key details would best support the main idea? Explain.

- A** Dinner parties are when people share food and interact in social exchange with friends and family.
- B** Around the world, food is a major part of wedding celebrations.
- C** A wedding is a celebration of two people getting married.

**Which details would best support the key detail of the new paragraph (D)?
Circle all that apply.**

- A** Most countries use a wedding cake to represent good luck for the new couple.
- B** A wedding is a celebration of two people getting married.
- C** At weddings in Korea, guests are fed noodles because it represents long life together.
- D** There are many different types of wedding cakes.



Reading

Read the passage.

Add the missing details to the passage *Healthy Eating*. Answer the question.

contain primarily plant foods

are packed with protein

promote healthy eating

Healthy Eating

A Healthy eating means consuming a variety of nutritious foods. Healthy foods contain energy, minerals, vitamins, and fiber that a person needs to be fit and strong.

There are three categories of food that that _____.

B The first group includes foods that come from plants. Foods that come from plants contain vitamins, minerals, and fiber. A person's diet _____.

C The foods in the second group are _____.

Protein helps build strong muscles and helps repair the body. In addition, some foods in group two contain calcium that creates strong bones.

Which new paragraph best supports the main idea of the text?

A The *sometime* foods are the least healthiest food. *Sometime* foods are usually high in sugar, fat, and salt, so enjoy them sometimes. The *anytime* foods are good to eat anytime.

B The third category of foods is called the *sometimes* food. They contain lots of sugar and fat such as cakes, candy, chips, and sodas. These foods should be eaten sometimes and not on a daily basis.

