

Theme is a **lesson** about **life** found in literature.

Theme can be **implied** or **stated**.

► You can use **events** from the **text** to **infer the theme**.

OTHER THEMES

Treat others as you
would like to be
treated.

Hard work now pays
off later.

Cheating gets you
nowhere.

Theme: Honesty is the best policy.

Mercury and the Woodsman

Adapted from Aesop's Fables

¹A woodsman was cutting down a tree on the bank of a river when his axe fell into the water. ²Suddenly, Mercury appeared. ³Mercury dove into the river and **brought up a golden axe**.

⁴The woodsman said that **this was not his axe**.

⁵Mercury dove in a second time and **brought up the woodsman's axe**. ⁶The woodsman **was very thankful**. ⁷Mercury was pleased **with his honesty** and **gave him the golden axe** as a gift.



Not examples - one-word topics such as:

"honesty," "lying," "jealousy," "greed"

CFU

Which is a theme? Explain.

A War is never the answer.

B War

Which is a theme? Explain.

A Jake said, "I was the one who did it."

B Taking credit for someone else's work is not wise.

- 1 Read question and then the text.
- 2 Identify events that suggest the theme. (underline)
- 3 Determine the theme. (circle)
- 4 Explain how the events helped you determine the theme.

The Chocolate Factory

(Adapted from Charlie and the Chocolate Factory)

¹Willy Wonka gave a tour of his secret chocolate factory to three lucky children.

²One boy wanted to drink from Mr. Wonka's chocolate river. ³Mr. Wonka told him to

stay away. ⁴The boy didn't listen and fell into the chocolate. ⁵When visiting another

part of the factory, Mr. Wonka showed the children an incredible piece of gum. ⁶Mr.

Wonka told them that the gum was not ready to chew. ⁷The girl grabbed the gum and

stuffed it in her mouth anyway! ⁸She started changing colors; then, turned into a giant,

purple grape. ⁹The last child, Charlie, listened to Mr. Wonka's rules. ¹⁰After seeing the

entire factory, Mr. Wonka gave Charlie a lifetime supply of chocolate.

1 Which sentence shows the theme of the story?

- A Those who follow the rules will be rewarded.
- B One boy wanted to drink from the chocolate river.
- C Chewing gum is bad for you.
- D It's hard to swim in chocolate.

2 Explain.

- 1 Read question and then the text.
- 2 Identify events that suggest the theme. (underline)
- 3 Determine the theme. (circle)
- 4 Explain how the events helped you determine the theme.

The Goose with the Golden Eggs

¹One day, a farmer going to the nest of his goose found a beautiful, glittering egg. ²When he picked it up, it was as heavy as lead. ³He decided to try to sell it at the market, and to his delight, discovered that it was an egg of pure gold. ⁴Every morning his goose laid a golden egg, and he soon became rich by selling the eggs. ⁵But it was not long before he grew impatient with the goose because she gave him only a single golden egg each day. ⁶He was not getting rich fast enough. ⁷The goose saw that the man was becoming greedier, so she started laying regular eggs. ⁸The man then became very angry and gave the goose away to a very poor man. ⁹At once, the goose started laying golden eggs again.

3 Which sentence shows the theme of the story?

- A Always treat animals kindly.
- B Greed results in having nothing.
- C Geese cannot make real golden eggs.
- D Greed is always rewarded.

4 Explain.

Skill Closure

- 1 Read question and then the text.
- 2 Identify events that suggest the theme. (underline)
- 3 Determine the theme. (circle)
- 4 Explain how the events helped you determine the theme.

Ant and the Dove

¹An Ant, going to a river to drink, fell in. ²A Dove felt sorry for her, and threw a small branch into the water so that the Ant could crawl out. ³Afterward, the Ant saw a man with a gun aiming at the Dove. ⁴The Ant bit him in the foot, made him miss, and saved the Dove's life.

1 Which sentence shows the theme of the story?

- A Doves are very kind birds.
- B Don't rely on friends to help you.
- C Ants' bites are painful.
- D Good deeds pay off.

2 Explain.**Concept Closure**

 **Write the explanation.**

George says that the theme of Cinderella is Love. Do you agree? Explain.

Summary Closure

What did you learn today about determining the theme of a story?

Word Bank

lesson about life
events
infer
events

- 1 Read question and then the text.
- 2 Identify events that suggest the theme. (underline)
- 3 Determine the theme. (circle)
- 4 Explain how the events helped you determine the theme.

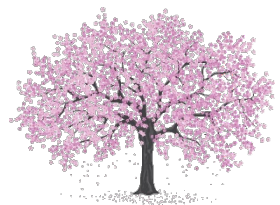
The Cherry Tree

by M. L. Weems

¹When George was about six years old, he was given a hatchet. ²He went about chopping everything that came his way. ³One day in the garden, he found a beautiful cherry tree. ⁴George went and chopped at the tree's bark until it died.

⁵His father soon discovered what had happened to his favorite tree. ⁶He was very upset and demanded to know who cut away the bark. ⁷Just then, George came into the room.

⁸"George," said his father, "do you know who has killed my beautiful cherry tree in the garden?" ⁹George replied, "I cut it with my little hatchet." ¹⁰The father said, "My son, thank you for telling the truth. ¹¹The truth means more to me than a thousand trees!"



1 Which sentence shows the theme of the story?

- A Killing trees doesn't pay.
- B Children shouldn't be given a hatchet.
- C Honesty is the best policy.
- D Sometimes you have to lie, so you don't hurt others.

2 Explain.



Listening

Listen carefully to the story. Determine the theme.

1 Which sentence shows the theme of the story?

- A** You should not take pity on others.
- B** Gold (money) cannot buy you happiness.
- C** Magic can cause problems.
- D** Gold (money) can buy everything in life.

2 Explain. (orally)

3 Write a sentence that supports the theme for “King Midas.”

**Read the passage.****Complete the sentences using the phrases. (one doesn't belong)**

both of them really enjoyed the camp

tried very hard to walk in them exhausted

it would be hard climbing

would have to be left behind

practicing a little every day

both able to return home

Mr. Brown had to go to his camp at Pine Tree Valley, which is in the midst of the mountains. There was a lot of snow on the mountains, and Mr. Brown knew _____ to the camp, but Lady Gray was strong.

Lady Gray was Mr. Brown's pet horse. She was always happy when her master was in the saddle. But today, the snow was very deep, and soon Mr. Brown had to get off and lead her.

Late in the afternoon they reached the camp exhausted. It was several days before Mr. Brown thought about returning. The snow was still deep, and Mr. Brown was afraid Lady Gray _____.

Finally, someone suggested making her some snow-shoes. Lady Gray _____. At first she could hardly stand up. But by _____. She was soon able to manage nicely.

So, they were _____.

Read the story carefully. Determine the theme.**1 Which sentence shows the theme of the story?**

- A** One should not travel in bad weather.
- B** Horses are hardworking animals.
- C** You don't know what you can do until you try.
- D** Snowshoes can be useful when walking in snow.

2 Explain. (orally)**3 Write a sentence that supports the theme for the story.**

**Read the story. Determine the theme. (write and justify)****Beauty and the Beast**

There once was a great Beast that lived in a castle in the middle of a forest. Everybody in the country held the Beast in great fear.

One day, Belle, a young woman, from a nearby village, was lost in the woods and sought shelter in the Beast's castle. The woman was blamed for trespassing, and the Beast told her that she could not leave. Belle was frightened at the sight of the ghastly-looking Beast and did not want to live in the castle. But, over time, the Beast showed a lot of kindness to Belle. He told her that he loved her and asked her to marry him three times a day.

One day, Belle couldn't find the Beast. She finally found him lying on the grass and thought he was dead. "Oh darling Beast; do not die, for I love you with all my heart, and will marry you tomorrow," and kissed him. At once, he sprang to his feet; no longer a hideous monster, but a beautiful prince. "A wicked fairy turned me into a monster," he said, "until the day came when a girl should tell me that she loved me." The spell was finally broken.

Read the text. Write the answers.

An author wants to write a story with a theme of a character who learns to **Never give up**. Select the sentence(s) that the author would likely use to suggest that theme. Explain why he would use those words.

- 1 Antonella dreams of becoming a famous ballet dancer. She attends dancing classes every day.
- 2 Antonella dreams of becoming a famous ballet dancer. Sometimes after a hard day, she thinks that she will not continue her classes.
- 3 Antonella dreams of becoming a famous ballet dancer. Her feet hurt almost every day, but she forces herself to practice a little more.

"The best sentence to use is _____ because

